

CLEFS

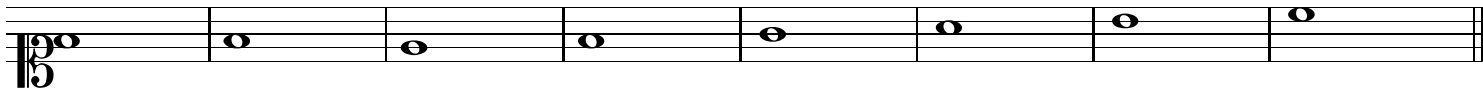
Soprano, Treble, Alto + Tenor, Baritone, Bass

Vocal Music

G G C C F F

Choral Voices

Soprano Clef: "soprano" is used to describe the highest pitched vocal range, usually produced by a female voice, but occasionally produced by men's and boys' voices of the soprano range. The range of the soprano is from about middle C to A5 above the treble clef. A professional soprano can typically reach C6 or higher.



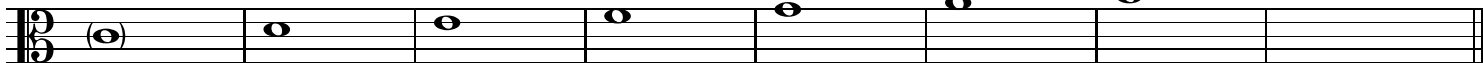
The **French violin clef** is similar to the ordinary treble clef but positioned on the bottom line of the staff to indicate the position of the pitch "G" above middle C. When the French violin clef is used, "G4" is the bottom line on the staff.



The **treble clef** encircles the second line of the staff, indicating that line to be G4 (or g above middle C). The treble clef is used for Soprano, Mezzo-Soprano and Alto voices.



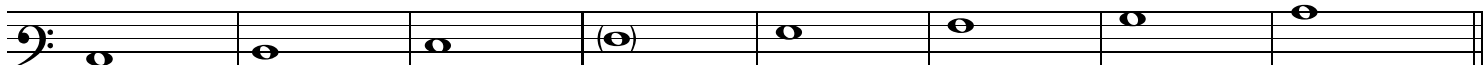
The **alto clef** is sometimes used for the notation of the alto part because it facilitates the printing of the part with minimal use of ledger lines. It is also known as the viola clef as the viola is the only instrument that uses it with consistent regularity. It can also be found to some degree in the music of the English horn, trombone and bassoon.



The **tenor clef** is sometimes used for the notation of the tenor part because it facilitates the printing of the part with minimal use of ledger lines. The tenor clef is one of the C clefs. The tenor clef should not be confused with the vocal tenor clef which is a G clef. The vocal tenor clef adds the number 8 below the normal G clef symbol indicating that the indicated staff should be performed one octave lower than indicated



The **baritone clef** is an old version of the F clef that locates f (below middle C) on the third line. There is also a rarely used baritone clef in the C clef. This clef puts middle C on the top line of the staff. This creates the same placement of notes as the baritone clef in the F clef. So both baritone clefs are essentially the same notation using different clefs.



The **bass clef** uses the F clef that locates F3 (below middle C on the fourth line). The bass clef is used for baritone and bass voices.

